

AGRICULTURAL COMMISSIONER'S OFFICE

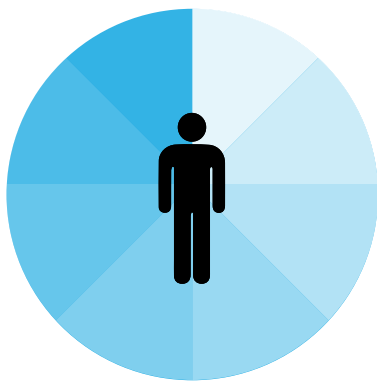
2017 Culture of Health Employee Needs and Program Interest Survey Results



EMPLOYEES RESPONDED

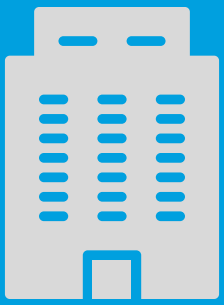


3 individuals "strongly interested" in being Culture of Health ambassadors



Most reported stress level "slightly low": 33% (an increase from 2015)

All reported stress levels remained at or about the same as 2015



Well-being is highly linked to engagement! Employees reported an increase in how well they feel the Agricultural Commissioner's Office is encouraging health behaviors.

46% are extremely or highly likely to recommend working at COR

54% are extremely or highly satisfied working at COR

Stay in the Know



The following County resources are here to support your well-being!

- Healthy Meetings & Activity Guidelines
- Board Policy for Use of County Facilities for Well-Being Activities
- Telemedicine from Amwell
- Farmers Markets

For resources from other County departments, visit Culture of Health's website



Fewer employees are taking their breaks

58% compared to 64% in 2015

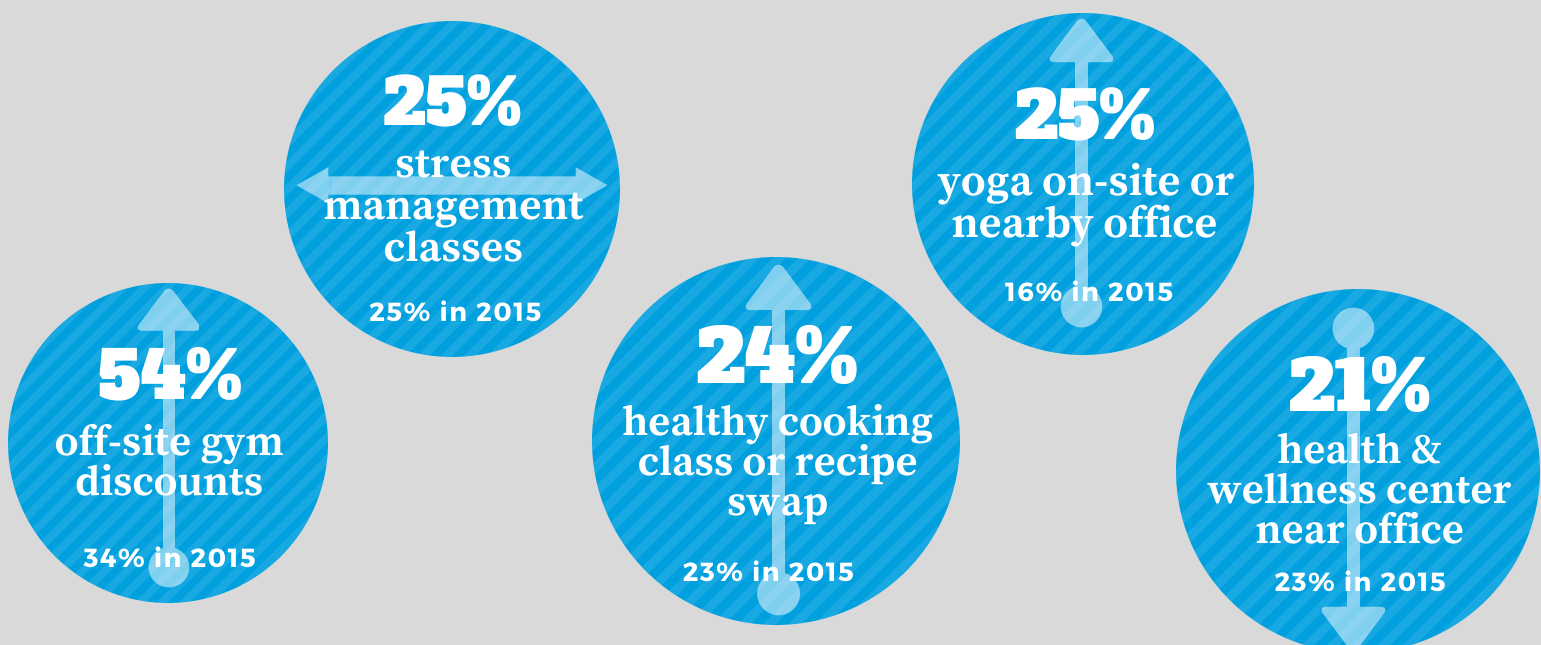
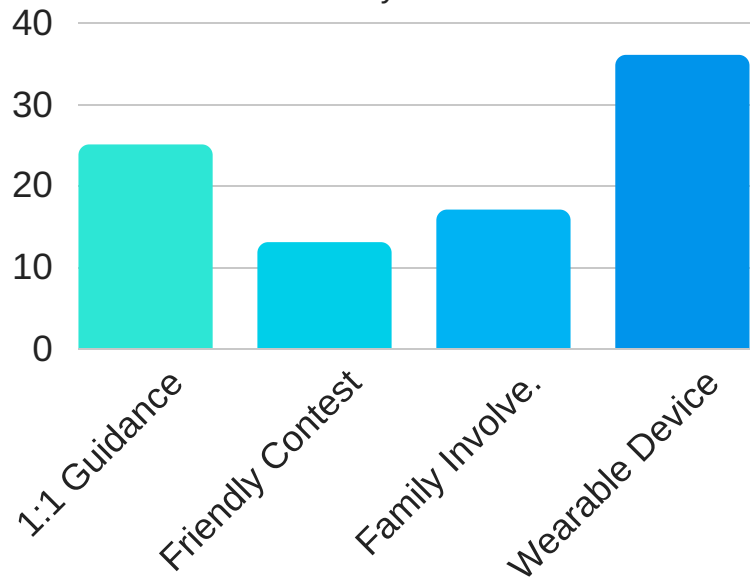
Taking breaks helps us stay focused, increase creativity, feel recharged, and prevent fatigue!

Top 5 Personal Health Goals

	2015	2017
Manage weight	55%	67%
Improve fitness	32%	33%
Improve sleep	27%	33%
Drink more water	36%	17%
Manage stress	23%	13%

Most Appealing Features of a Well-Being Program

in addition to "easy to do/convenient"



Activities You'll Likely Participate In